

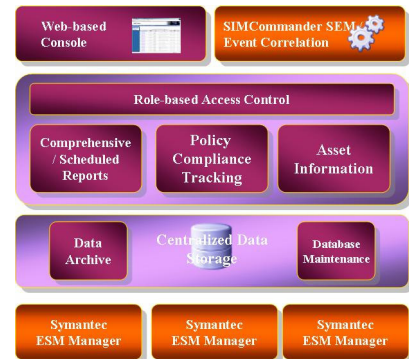
# SIMCommander Compliance Portal

For Symantec Enterprise Security Manager

## SIMCommander Compliance Portal

### Overview

SIMCommander Compliance Portal (SCP) is a web portal for enhancing the capabilities of Symantec Enterprise Security Manager (ESM) on reporting, change & control, vulnerability tracking, auditing and policy compliance. SCP allows security administrators to customize or create reports based on ESM data which has been complied with internal and external policies. SCP also allows security administrators to set privileges for different users to access various reports and data.



### Key Features and Benefits

#### Information Access Control

SCP enhances the information access control for ESM. The information access decisions can be based on the individual's roles and responsibilities within the organization or a group of users. This process of defining roles can control users on analyzing which system and information can be reviewed or generated report. And this is usually linked to the organization's security policy and any relevant regulations. For instance, Windows administrators can generate vulnerability reports on Windows Server Group or individual Windows Server only, while Unix administrators can only view Unix server reports.

#### User Privileges Control

SCP allows administrators to control user privileges on their site using permission functionality. There are different types of privilege that administrators can permit the user to access based on their job responsibilities. For instance, auditors can only view data and generate reports but cannot add annotations or change vulnerability ticket status.

#### Policy Compliance Tracking

SCP provides a Vulnerability Tracking Dashboard that allows administrators easy to understand the policy compliance status of each business asset such as how much new vulnerability found, how many have been fixed, and how many are still pending on the specific server. Based on the policy compliance tracking capability, security manager can easily to assign responsibilities to system administrators on system vulnerabilities and facilitate information sharing among different users.

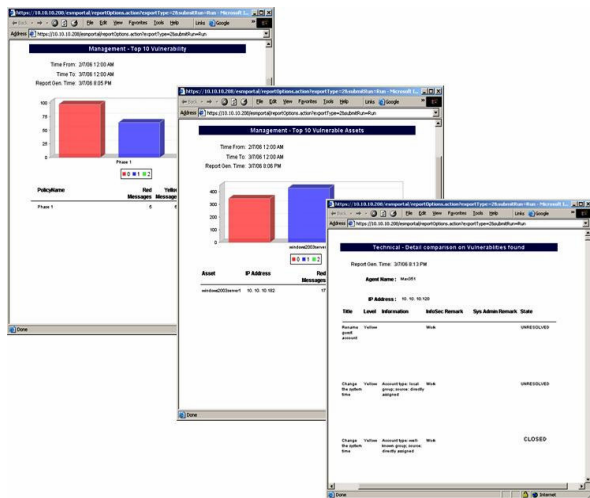
The dashboard provides a fast and easy filtering feature for customers to query vulnerabilities based on severity, status or individual server by just a simple click.

ID	Job Start	Agent Name	Policy	Status	Next	Last Annotation
188001	03/01/2005 08:55	Mac351	Password Strength	Fail	Normal	None
188002	03/01/2005 08:55	Mac351	Login Parameters	Fail	Normal	None
188003	03/01/2005 08:55	Mac351	File Watch	Fail	Normal	None
188004	03/01/2005 08:55	Mac351	File Attributes	Fail	Normal	None
188005	03/01/2005 08:55	Mac351	Disk Quota	Fail	Normal	None
188006	03/01/2005 08:55	Mac351	Backup Integrity	Fail	Normal	None
188007	03/01/2005 08:55	Mac351	Backup Integrity	Fail	Normal	None
188008	03/01/2005 08:55	Mac351	Password Strength	Fail	Normal	None
188009	03/01/2005 08:55	Mac351	Login Parameters	Fail	Normal	None
188010	03/01/2005 08:55	Mac351	File Watch	Fail	Normal	None
188011	03/01/2005 08:55	Mac351	File Attributes	Fail	Normal	None
188012	03/01/2005 08:55	Mac351	Disk Quota	Fail	Normal	None
188013	03/01/2005 08:55	Mac351	Disk Quota	Fail	Normal	None
188014	03/01/2005 08:55	Mac351	Backup Integrity	Fail	Normal	None
188015	03/01/2005 08:55	Mac351	Backup Integrity	Fail	Normal	None
188016	03/01/2005 08:55	Mac351	Disk Quota	Fail	Normal	None
188017	03/01/2005 08:55	Mac351	Disk Quota	Fail	Normal	None
188018	03/01/2005 08:55	Mac351	Backup Integrity	Fail	Normal	None
188019	03/01/2005 08:55	Mac351	Backup Integrity	Fail	Normal	None

## Enhance ESM Reporting Capabilities

SCP provides more advanced reports templates for different audiences such as:

- **Auditing Reports** - report on which server vulnerability has been fixed this month
- **Management Reports** - Top 10 Vulnerability Assets, Remediation Report
- **Technical Reports** - with overall vulnerability listing
- **Policy Compliance Reports** - a report for policy compliance tacking
- **Departmental Reports** - generated reports by server group or individual server with vulnerability listing
- **Comparison Reports** - comparison between two vulnerability scanned results, which allow security administrator to verify whether the vulnerabilities found earlier have been fixed, and at the same time to identify new vulnerabilities



## Multiple Report Formats

SCP supports different languages report layout including English, Simplified & Traditional Chinese and Japanese. All reports can be exported to PDF, Excel, HTML and image formats.

## Auto Report Generation and Distribution

SCP provides report scheduling feature for security manager or system administrators easily to generate reports and send to desired users by email.

## Asset Information Management

SCP Asset Information Management allows administrators to add more details asset information that can accelerate the response time, identify the asset location and contact the system owner which new vulnerability found. Asset information includes the name of the asset, operating system, IP, MAC address information, physical location and system owner.

## Centralized Data Storage

SCP combines two or more ESM Managers' data into a single database for centralized data storage. This allows administrators to generate the overall reports across multiple ESM Managers for centralized management.

## Advanced Data Management

SCP collects, processes and stores ESM data automatically and comes with a database tool for database maintenance such as purging, archiving and backup ESM data without requiring a full-time DBA. The DB Tool also provides alerting functions to monitor the database server and send alert notification when the hard disk space size is insufficient or database size hits the limit etc...

SCP supports compression and encryption for the data backup and restore to enhance the database security and integrity of the data storage for comply to regulatory compliance such as ISO 17799/BS 7799

## System Requirements:

- Intel P4 - 2GHz
- 1GB Ram
- 80GB Hard drive
- OS: MS Windows 2003 with latest SP
- Database Server: MS SQL Server 2000 with latest SP